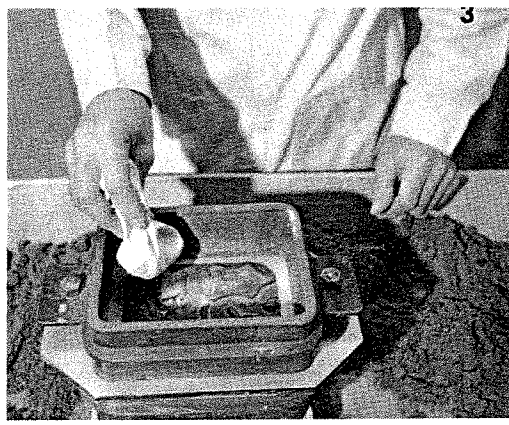


If the sand contains correct moisture, a lump squeezed in hand will break with clean, sharp edges.



Dusting pattern with parting compound preparatory to ramming the drag.



Riddling one-inch layer of sand over all pattern surfaces.

The CERRO FOUNDRY TEACHING AID is made of the highest quality materials, designed for long life under the casual handling it is likely to receive in daily use. The miniature flask is identical in every way with the standard heavy duty flasks used in foundries but is of smallest practical size. Ease of handling and small storage requirements are factors to be considered in selecting equipment of this kind.

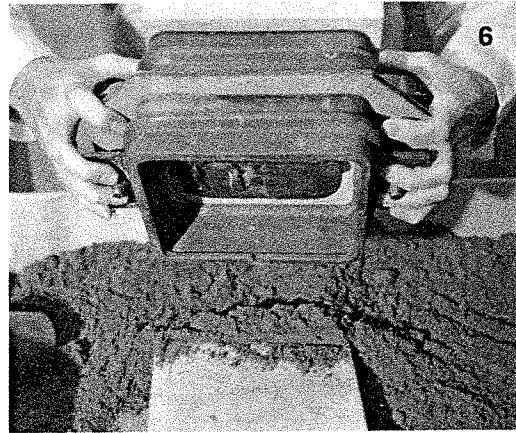
The match plate and mold board are $\frac{3}{8}$ " thick non-warping plywood with plastic impregnated facing on both sides. No painting or refinishing is ever necessary with this plate and mold board, and sand does not stick to their surfaces. The tools, such as rammer, riddle, etc., are of best quality obtainable. If desired, they may be

omitted from the kit in cases where these tools are already on hand.

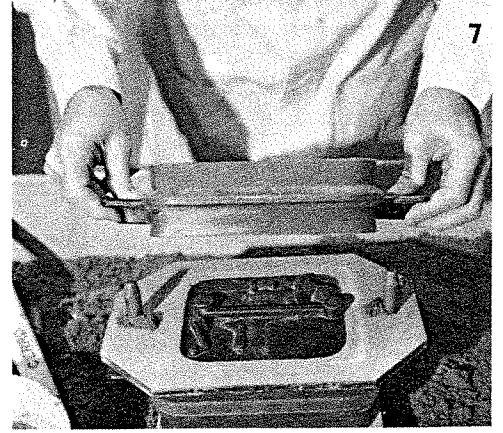
Extraordinary versatility is another feature which makes the CERRO FOUNDRY TEACHING AID attractive to Industrial Arts Teachers. After the casting demonstration the alloy may be salvaged and re-used to instruct students in a wide variety of industrial applications. For example, Cerrobend is used for: making fusible chucks for spinning bottle neck shapes; supports for delicate parts while being machined; electroforming internal and external shapes; making duplicate patterns for foundry match plates, ceramics, plastics; filler in bending thin-walled tubing; etc. These applications are described more fully on Page 4.



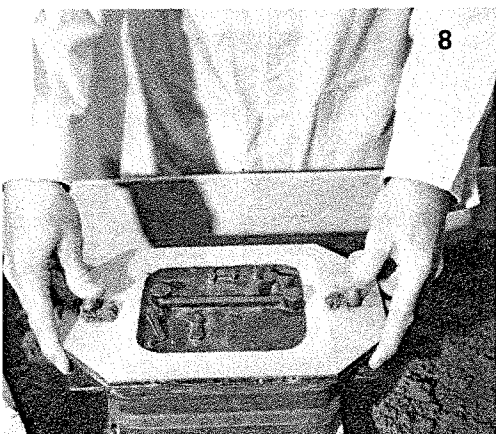
Peening sand against vertical sides of drag.



Rolling over flask, with bottom board in position on drag.



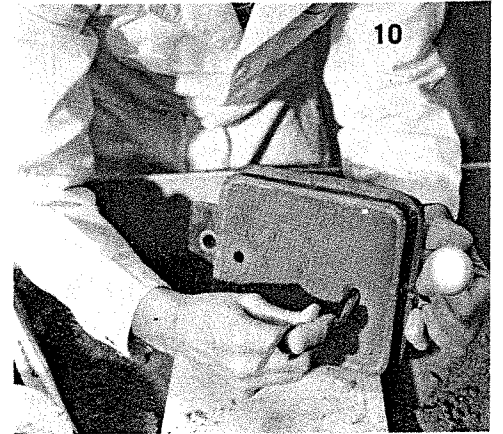
Rammed cope being removed from flask.



Matchplate being removed from drag. Note



Making holes in cope for sprue and riser.



Enlarging sprue opening.